

# Havana

8"x8"



8"x8" . 20x20 cm

Glazed Porcelain Stoneware

ANSI A 137.1 compliant



8"x8": WALL / FLOOR



MODERATE



0.34 in  
8.5 mm



ASTM C 1026  
RESISTANT



ASTM C 373  
~0.1%



ASTM C 650: CLASS A  
ASTM C 1378: CLASS A

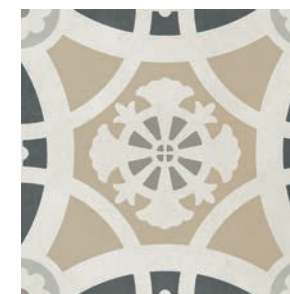


ANSI A 326.3:2017 release 2019.  
(DCOF): ≥0,42

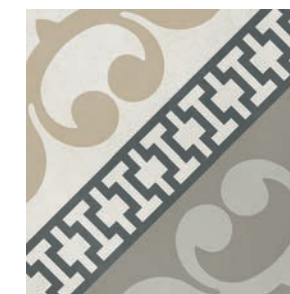


MEDIUM USE

Made in San Marino



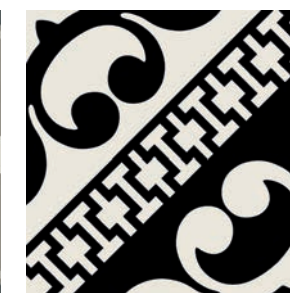
Havana Gables



Havana Key West



Havana Brickell



Havana Banyan

## Graphics number

| Sizes | Havana Gables | Havana Key West | Havana Brickell | Havana Banyan |
|-------|---------------|-----------------|-----------------|---------------|
| 8"x8" | 1             | 1               | 1               | 1             |

## Packaging

| Sizes | Pieces | Sq.Ft. | Lbs.  | Boxes | Sq.Ft. | Lbs.    |
|-------|--------|--------|-------|-------|--------|---------|
| 8"x8" | 29     | 12.49  | 48.78 | 45    | 561.87 | 2240.00 |



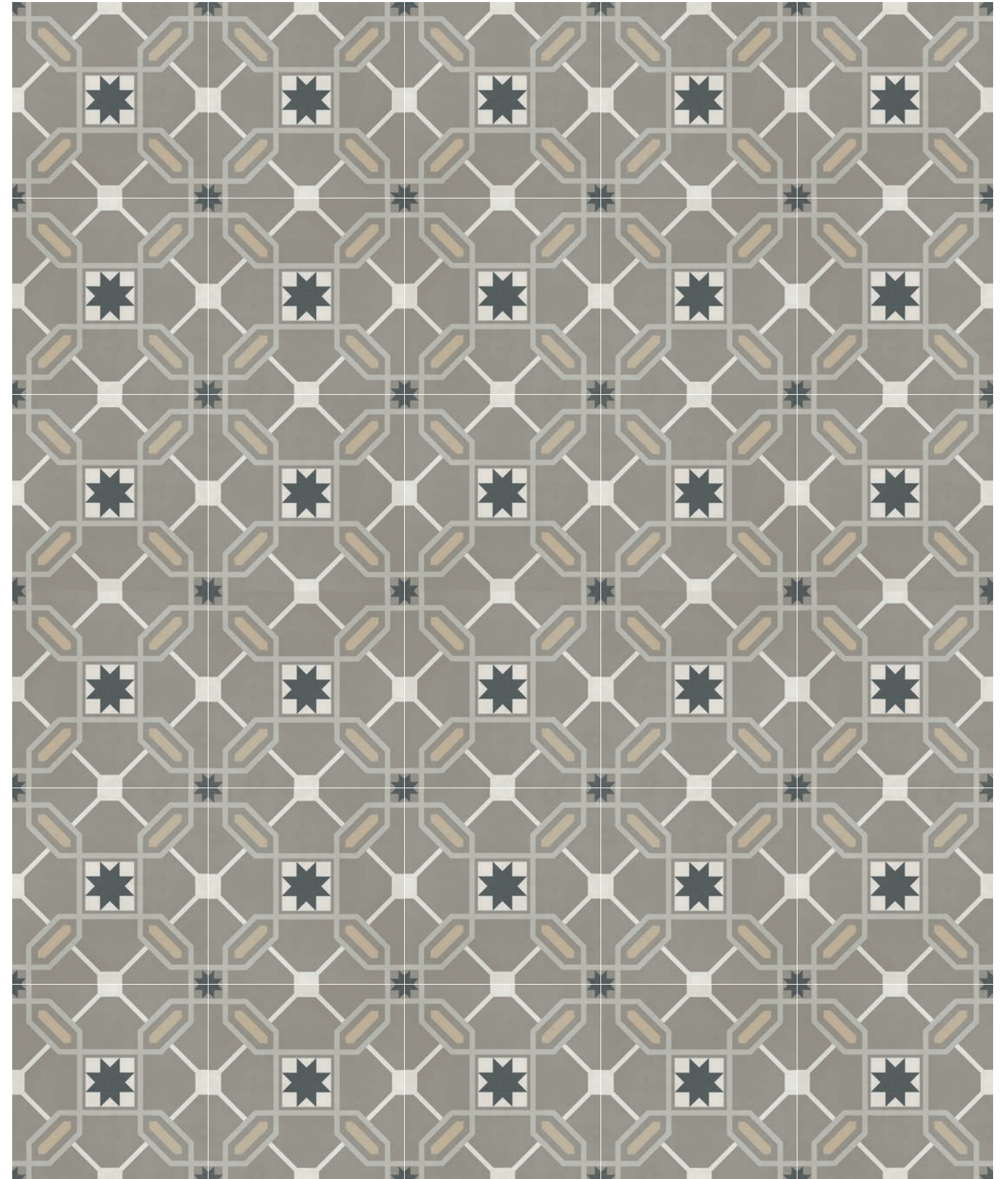
# Havana

8"x8"

Decorative Effect



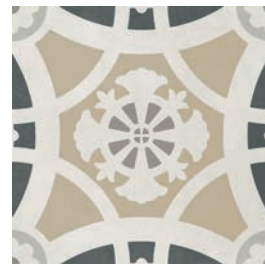
Decorative Effect





# Havana

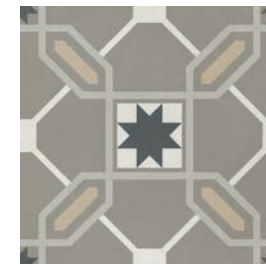
8"x8"



**20AA00GAA**  
Havana Gables  
8"x8" . 20x20 cm



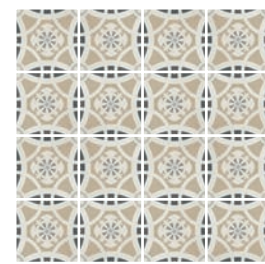
**20AA00KEA**  
Havana Key West  
8"x8" . 20x20 cm



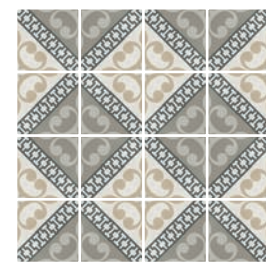
**20AA00BRA**  
Havana Brickell  
8"x8" . 20x20 cm



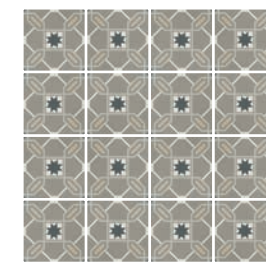
**20AA00BAA**  
Havana Banyan  
8"x8" . 20x20 cm



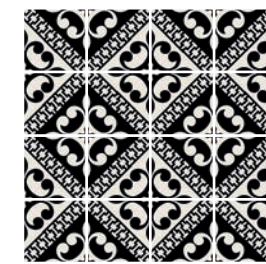
**HAVANA GABLES**  
Sample layout 4x4 tiles



**HAVANA KEY WEST**  
Sample layout 4x4 tiles



**HAVANA BRICKELL**  
Sample layout 4x4 tiles



**HAVANA BANYAN**  
Sample layout 4x4 tiles